

Catalogue of Works

Nadine Teixeira

Works 2022-2025

2025

Contents

Audit – What the Surface Reveals	03
Audit – Works	04
Genesis Works – Structural Emergence	12
Genesis Works	13
Legal Notice	20

Audit – What the Surface Reveals

Series 2024-2025

The series „Audit – What the Surface Reveals” transforms a procedural approach into a formalized procedure. The works are produced through clearly defined sequences—application, pressure, drag, and removal—in which the material is systematically shifted, compacted, and opened.

The surface operates as a visual protocol of this procedure. Layer sequences, linear displacements, and zones of density appear as the result of repeated process cycles, forming a traceable audit pattern.

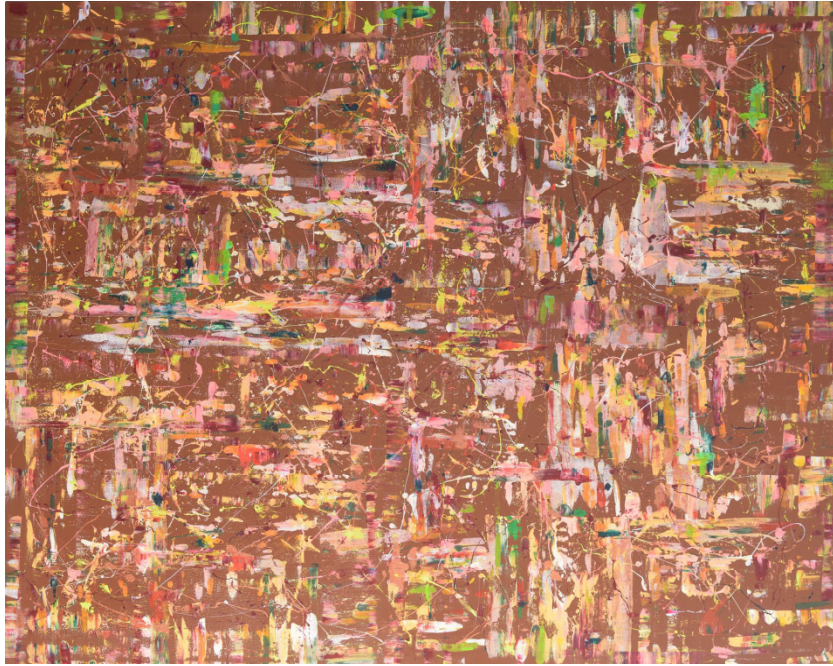
The pictorial space is examined, corrected, and carried forward through multiple iterations until a process-related order becomes discernible. Within the works, the tension between predefined operations and factors that cannot be fully determined becomes manifest—a core characteristic of systemic structures in an audit context.



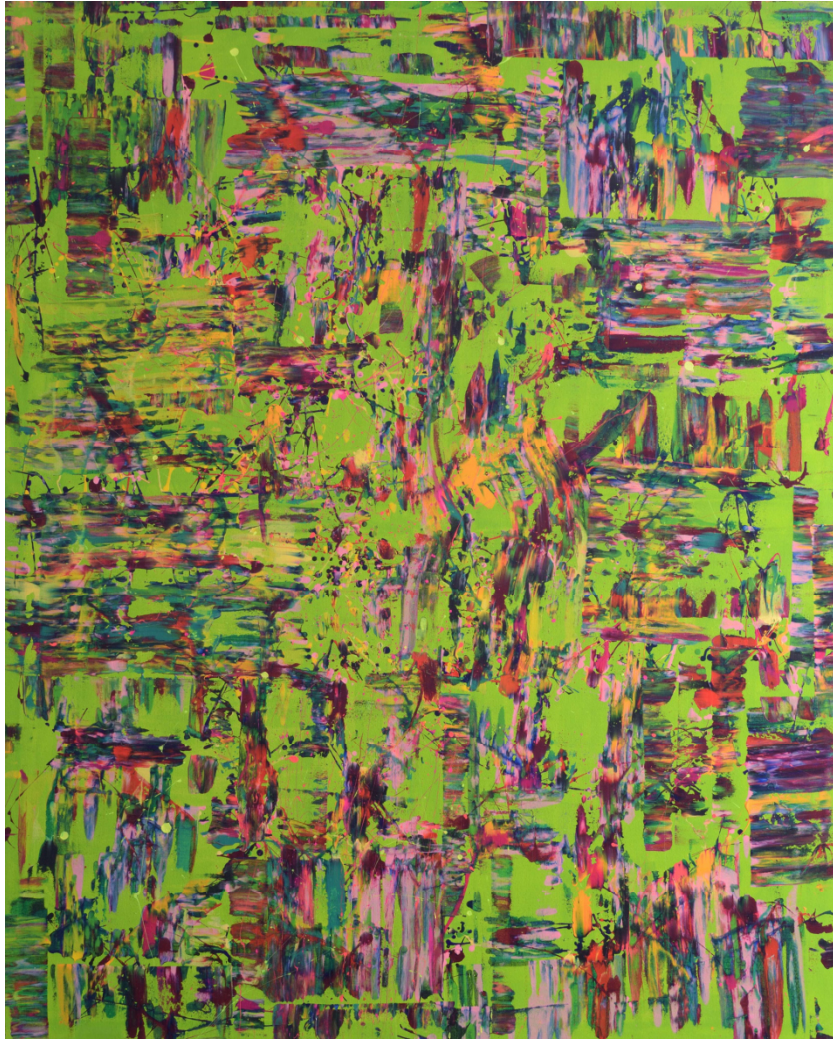
NT2025-02
Acrylic on canvas
150 x 120 cm
2025



NT2025-01
Acrylic on canvas
120 x 150 cm
2025



NT2024-06
Acrylic on canvas
120 x 150 cm
2024



NT2024-05
Acrylic on canvas
150 x 120 cm
2024



NT2024-04
Acrylic on canvas
150 x 120 cm
2024



NT2024-03
Acrylic on canvas
120 x 150 cm
2024



NT2024-02
Acrylic on canvas
120 x 150 cm
2024



NT2024-01
Acrylic on canvas
150 x 120 cm
2024

Genesis Works

Series 2022-2023

The “Genesis Works” mark the phase in which the foundational architecture of a process-oriented pictorial practice takes shape. In these early works, initial operative fields emerge through sequential systems of application, pressure-based movements, linear shifts, and spray-based distributions.

The works function as test environments in which the behavior of the material is examined under varying parameters. Through repeated interventions, layers, fragmentations, and displacements develop, becoming readable as visual protocols of the process.

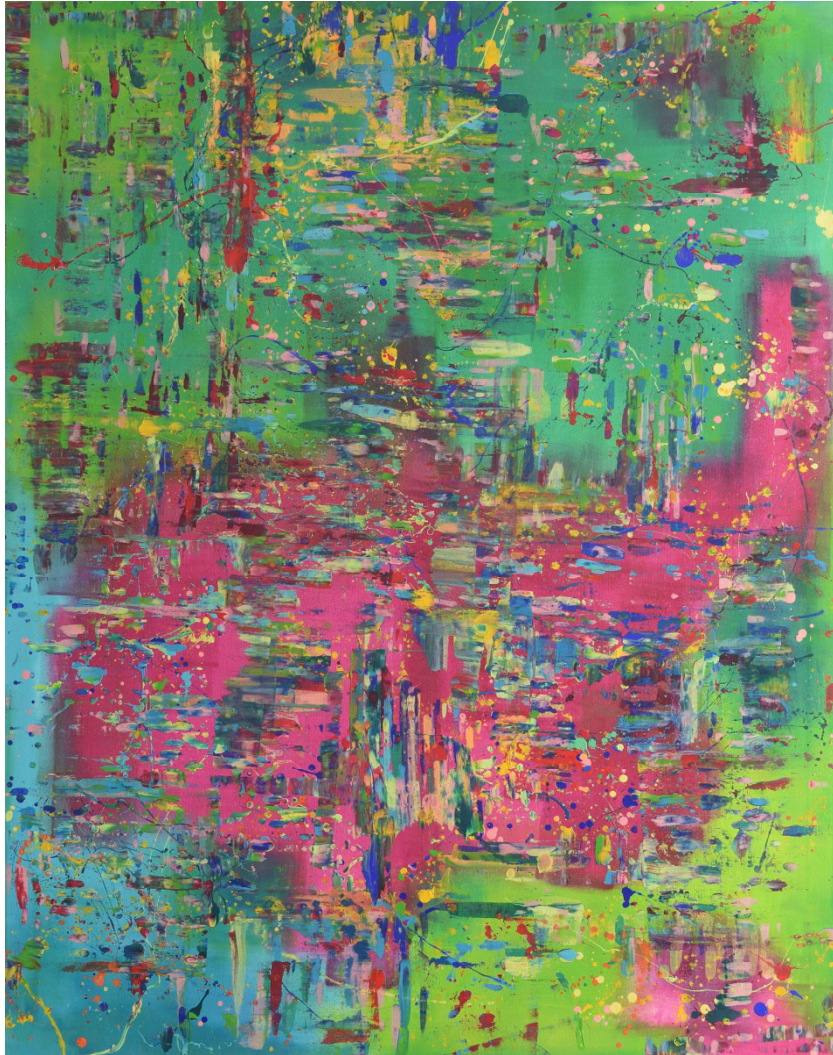
Already at this stage, those structural constants become apparent that are later methodologically refined in the Audit series: the relationship between order and deviation, the role of controlled variability, and the emergence of pictorial fields that result from a systematically constructed yet not fully determinable process.



NT2023-01
Acrylic on canvas
145 x 145 cm
2023



NT2022-06
Acrylic on canvas
120 x 120 cm
2022



NT2022-05
Acrylic on canvas
140 x 110 cm
2022



NT2022-04
Acrylic on canvas
145 x 120 cm
2022



NT2022-03
Acrylic on canvas
150 x 150 cm
2022



NT2022-02
Acrylic on canvas
140 x 100 cm
2022



NT2022-01
Acrylic on canvas
140 x 120 cm
2022

Legal Notice

© 2025 Nadine Teixeira

Editor: Nadine Teixeira

Image rights: © Nadine Teixeira

Nadine Teixeira

Stuttgart, Germany

www.nadineteixeira.com

First publication 2025

All rights reserved.